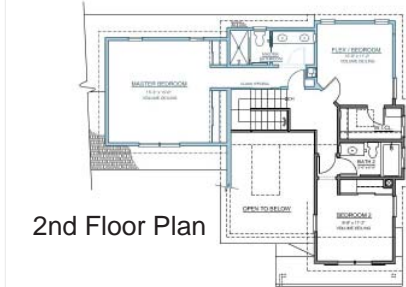
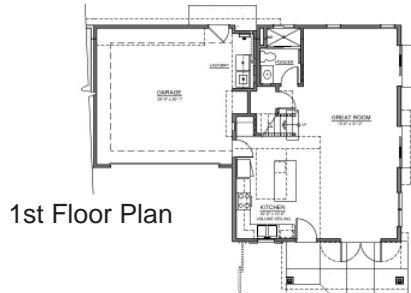


2nd Floor Plan



2nd Floor Plan



1st Floor Plan



1st Floor Plan

2 BR / 3 B / Loft Plan

4 BR / 3 B Option



Midtown 10 Housing Project, Costa Mesa, CA: Peter Zehnder, founding partner of Better Shelter, and Matt White of Matt White Custom Homes with the collaboration of Warmington Homes commissioned BPS to design a progressive infill housing project in the midtown area of Costa Mesa. This sustainable project consists of ten semi attached, contemporary cottage homes with a quaint neighbor-friendly street scope, old fashioned front porches, boutique private yards, and a flexible floor plan that can transition from two bedrooms to four bedrooms as the family grows. The open floor plans also feature a west coast styled great room/kitchen with a volume ceiling and a daylight dormer window that illuminates the center of the home over the kitchen island and central stairway.

